

Nasson Community Bicycle Center Programs 2011-2012

NASSON COMMUNITY CENTER and LITTLE THEATRE

457 Main Street
Springvale, Maine 04083
(207)324-5657

Website: www.nassoncc.org
Email: nassoncc@metrocast.net

THE NCBC's WISH LIST:

- VOLUNTEERS! Youth mentors, bike collectors, marketing geniuses, fun(d) raisers
- Bicycles in good condition
- Monetary donations

*To volunteer or make a donation please contact
Maryalice Walker:*

*(207) 324-5657 or e-mail
nassoncc@metrocast.net*

Nasson Community Bicycle Center

NASSON COMMUNITY BICYCLE CENTER – COMMUNITY PROGRAMS

The Nasson Community Bicycle Center was started during the summer of 2010 by 60 Sanford Junior High School students, who with their mentors built workbenches and repaired bikes for donation to community members who earned them through community service. The Sanford Police Department donated 55 bikes to get the program started.



It has evolved into Youth Expeditions and Service (YES), a new and growing program open to 10-18 year olds. With the help of volunteer mentors this program is set up to provide opportunities for youth development through bike repair and maintenance, road and trail riding, and other outdoor activities. Community service activities include trail maintenance and building bikes for community members in need.

Youth Programs

- **Tuesdays 2:00-5:00 p.m. Bicycle repair.** Earn-a-bike participants earn a bike to repair for themselves by **a)** repairing a bike for a community member in need **OR b)** donating \$5 with \$1 per each used part (not to exceed \$10). Participants may bring in their own bike to maintain.
- **Thursdays 2:00-5:00 p.m. Group rides.** Participants ride local road and trail routes with ride leaders Peter Chace and Maryalice Walker. Please call ahead to participate.

Off-season activities may include sledding, snowshoeing, stationary bike races, and recycled art.



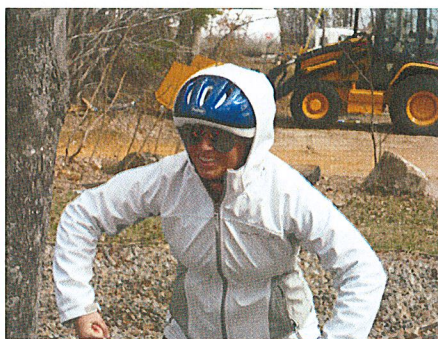
Find us on Facebook! Search for "Nasson Community Center and Little Theatre."

Nasson Community Bicycle Center Programs 2011-2012

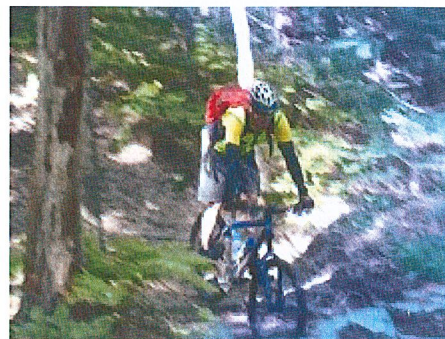
Staff



**Maryalice Walker, Resiliency
Activities Coordinator**



**Cassandra (Casey) Maggio, Youth
Outreach Coordinator**



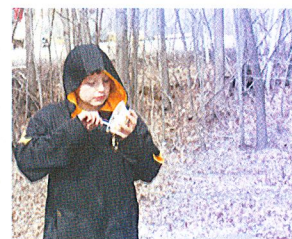
Peter Chace, Bicycle Mentor

Recent Activities!



First ride of the season, 5.5 miles into Acton.

Our April ice cream ride (right) was a cold and breezy one, but we rode 5.6 miles!



Thank you to all who donated bicycles on Bicycle Collection Day, April 2nd. We collected 20 bicycles!



Peter Chace mentors a youth mechanic in Tuesday afternoon open shop.



Preparing to build a cyclocross bike at Tuesday night open shop.

Thank you for your support: Maine Community Foundation, Bicycle Coalition of Maine, Cyclemania, Trips for Kids International, Biddeford Community Bicycle Center, Lowe's Sanford, Sanford Hannaford and Shaw's Supermarkets, Chris Ebbrecht, Celeste Fletcher, Phil Harvey, Jerry Simpson, and our many bike donors!!