

Front Hub, Cup and Cone Bearing. Ball bearings run along a "cup" and a "cone". The adjustment of the cup and cone is critical and the adjustment is held in place by the locknut.

Axle nut. Not part of bearing system, used to secure wheel to bike frame

Axle. In this case, the axle is solid and it uses axle nuts to secure to the frame. Quick release skewers require a hollow axle.

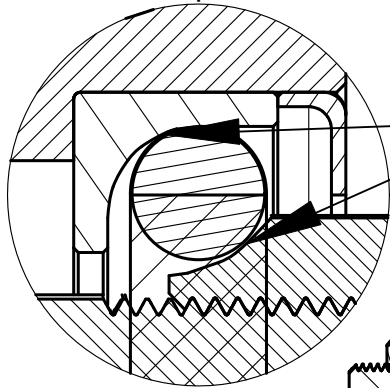
Hub flange.

Where the spokes attach to the hub

Cone. Use cone wrench to adjust

Locknut

There may be washers and/or spacers in between the cone and locknut, especially on rear wheels



DETAIL B

Bearing Races. Where the ball bearings touch the cup and the cone

Ball Bearing

Cone

Cup. The "cup" in this case is built into the hub shell

NOTES