

milkweed seeds or aliens?

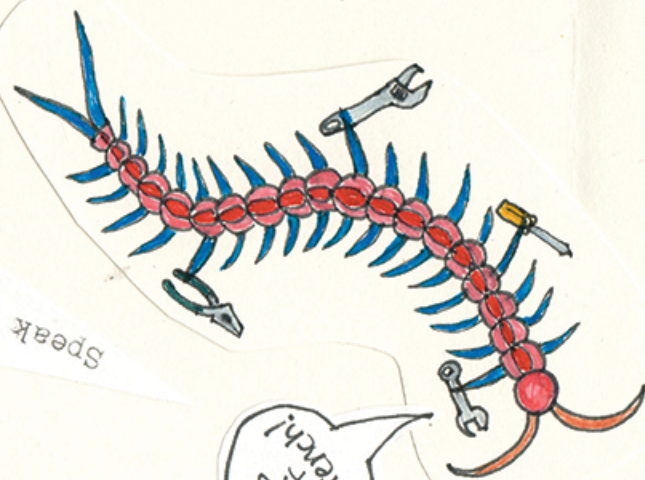


Communicate

Help on
your skills



Get unstuck
(from your rut)



Speak Spanish

Hands
off
wrench!

Do it yourself



Learn to use tools

Fix your bike

LEARN

ADVENTURE



Traverse
together



Get to know
your city

rain, rain go away!



Be active



Bikepacking and
community rides

Survival

Trust
each other



Navigate
obstacles



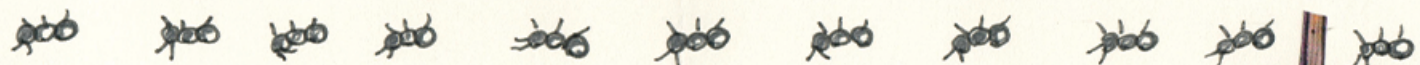
Stay mobile



ACCESS Joy

Lift each other up!

ant invasion!



Eat Shop Soup



PARTY!



Support each Other

Share Food



Meet your neighbors



GATHER



IOWA CITY
RESILIENCE
HUB

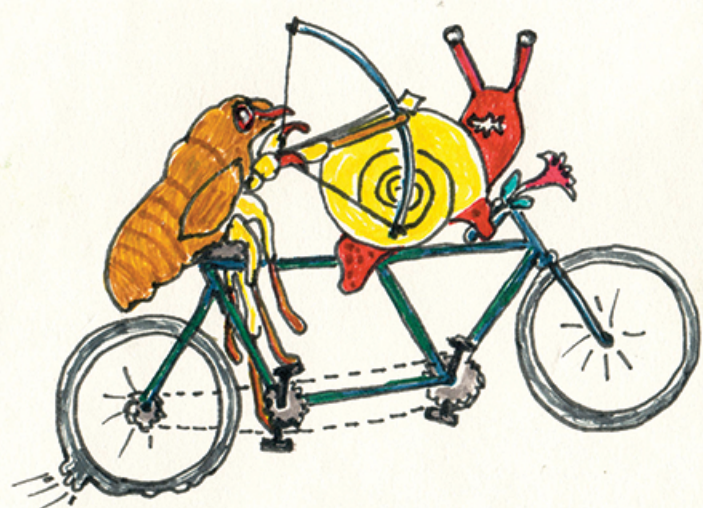
The Bike Library, in partnership with Johnson County Neighborhood Centers and the City of Iowa City, serves as a Resilience Hub dedicated to fostering community resilience, reducing carbon pollution, and improving quality of life. Through resource distribution, communication, and climate change mitigation efforts, the Hub empowers individuals to thrive before, during, and after disruptions. It's a space to LEARN, GATHER, and ADVENTURE, building a self-determined, socially connected, and equitable community. The Hub ensures that we are prepared, connected, and resilient, no matter the challenge!

The iconic mural in the Bike Library courtyard, titled Petrichor, was created by artist Erykah Danner. Have you really taken a moment to explore it? Find the art featured in this zine!

For more info on Resilience Hubs scan below or visit resilience-hub.org



everyday life at the
BIKE LIBRARY



prepares u 4 when life blows up